

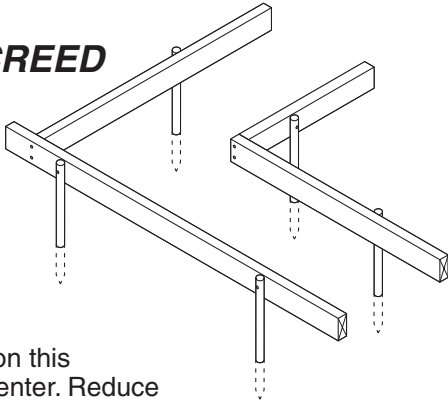
# FASTFOOT® INSTALLATION

## 1 SETUP SCREED BOARDS

Layout the outside footing stakes (steel or 1x4s) around the perimeter using a string line.

Drive the stakes on this line about 6' on center. Reduce spacing for deeper footings or if the ground is less dense.

Drive inside stakes opposite each outside stake using a 1x2 cut to the footing width.



**SOLIDLY ATTACH SCREED BOARDS**  
Concrete produces downward tension in fabric. Use 3 nails or 2 screws (2-1/4") per stake.

## 2 INSTALL FASTFOOT®

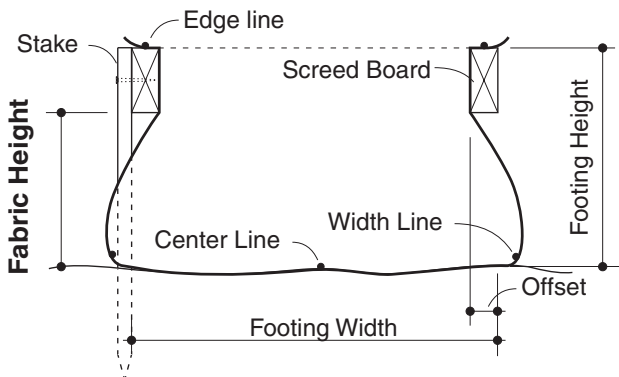
Pull Fastfoot® between stakes and nail center line to ground to prevent shifting. Allow 8" overlap on all joints.

Place one hand on correct width line (see table)

on the ground and bring fabric edge snugly over the screed board. Staple in position using a hammer tacker with 3/8" staples about 12" on center. Reduce spacing for deeper footings.

Ensure the two edges are in line by using line-dots located every 14" along edge lines. Use edge lines for alignment when grade does not change.

Attach 1x4s across screed boards to prevent side deflection from concrete. Hang steel reinforcing from 1x4s. Ready for concrete.



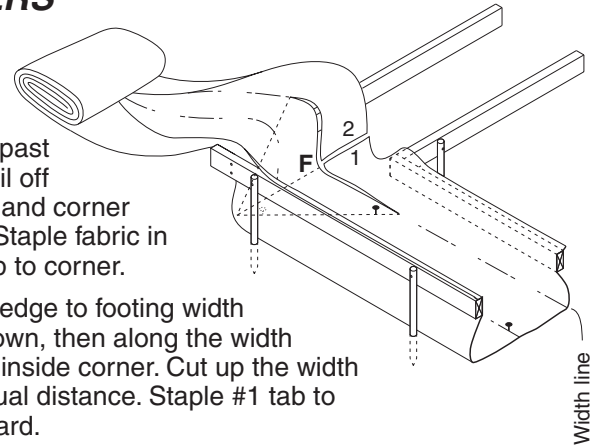
**10" FABRIC HEIGHT RULE**  
If fabric height is greater than 10", install second 2x4 to reduce bulge and tension.

## CORNERS

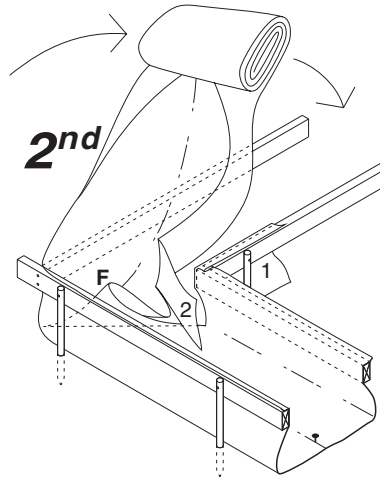
### 1st

Run Fastfoot® past corner. Nail off centerline and corner diagonal. Staple fabric in position up to corner.

Cut fabric edge to footing width line as shown, then along the width line to the inside corner. Cut up the width line an equal distance. Staple #1 tab to screed board.

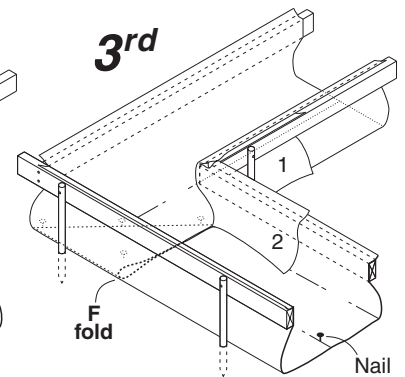


### 2nd



Lift fabric up at F, pivoting the roll around outside corner until aligned in new direction.

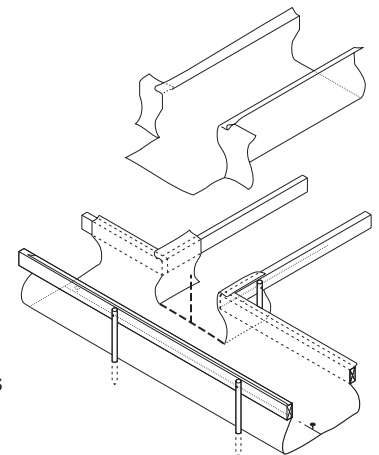
### 3rd



Lay down fold F and nail. Staple tab #2 to screed board.

## T-JUNCTIONS

Run the fabric through junction as shown. Cut an 'inverted T' in the junction area with the lower cut along the footing width line. Fold and staple tabs as shown. Run the intersecting fabric into the junction allowing an 8" overlap. Cut the overlap along the footing width line, and staple the overlapping tabs to the screed boards.



**STEPS** See reverse.

| FOOTING WIDTH LINES |       |
|---------------------|-------|
| Color               | Width |
| Lt Blue             | 12"   |
| Red                 | 16"   |
| Yellow              | 20"   |
| Green               | 24"   |
| Blue                | 28"   |
| Brown               | 32"   |
| Purple              | 36"   |

**REQUIRED FABRIC WIDTH (full footing)**  
Equals footing width + twice height + 14".  
Fastfoot® widths: Edge 37", Narrow 50", Standard 62", Wide 74", for larger footings run fabric on each side as edging (see next page).

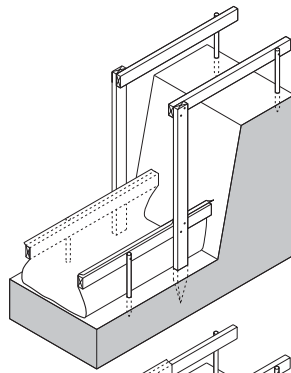
**FAB-FORM INDUSTRIES LTD.**

[www.fab-form.com](http://www.fab-form.com)

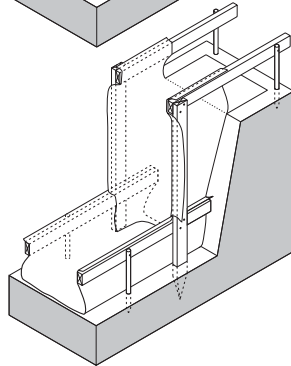
Toll free: (888) 303-FAST (3278)

# FASTFOOT® STEP INSTALLATION

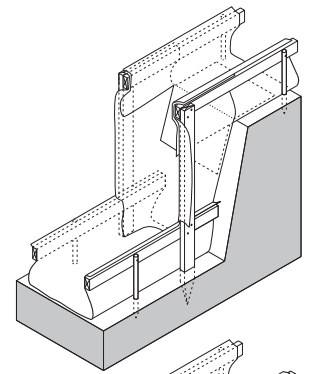
1. Drive pairs of 2x4 stakes into the ground and screw to upper and lower screed boards. Trim upper screed boards flush with vertical stakes. Drive additional stakes if the distance between the 2x4 stake and bank is greater than 10". Install lower level fabric.



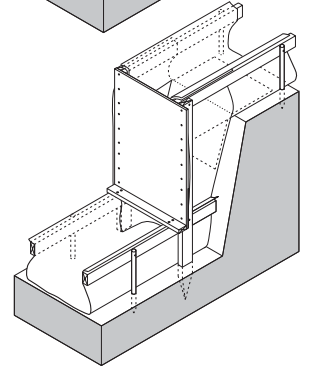
2. Run fabric up bank to form step. Most steps are too deep to form with a single fabric width. Either run two widths of fabric as edging or turn the fabric 90 degrees to obtain the required width.



3. Install the upper level fabric with an 8" overlap. Cut the overlap on the footing width line, letting center portion hang down bank.



4. Screw plywood bulkhead in position and brace as required.

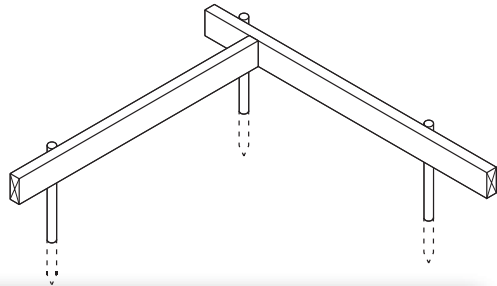


SEE VIDEO ON WEB

# EDGING INSTALLATION

## 1 SETUP SCREED BOARDS

Drive stakes around the perimeter of the proposed slab or footing at about 5' on center.



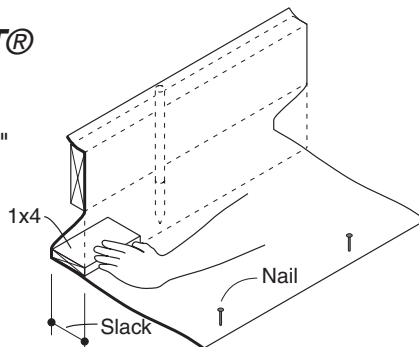
**SOLIDLY ATTACH SCREED BOARDS**  
Concrete produces downward tension in fabric. Use 3 nails or 2 screws (2-1/4") per stake.

For slab edging use deeper edge lumber (2x6 or 2x8) if a flat face is required for exposed edge. For footings, drive stakes on the footing line, so the 1-1/2" will save concrete.

## 2 INSTALL FASTFOOT®

Staple the edge of the fabric to the top of the screed board using a hammer tacker with 3/8" staples on about 12" centers.

Provide sufficient slack in the fabric by using a 1x4 as shown, and nail fabric to ground at 4' centers to stop fabric pull-out from concrete pressure. Allow an 8" overlap at all joints.

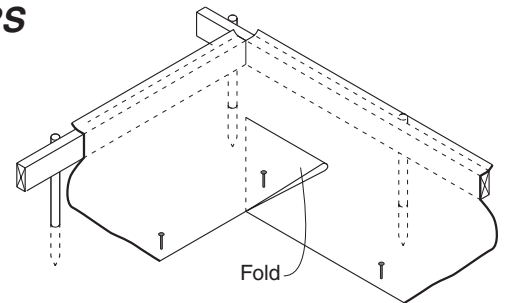


**REQUIRED WIDTH**  
2 x concrete height + 7"

**10" FABRIC HEIGHT RULE**  
If fabric height is greater than 10", install second 2x4 to reduce bulge and tension.

## CORNERS

For outside corners, fold fabric on ground and nail through three layers to hold in position.



For inside corner, cut fabric on the ground to enable it to go around corner and nail in position.

**FAB-FORM INDUSTRIES LTD.**

[www.fab-form.com](http://www.fab-form.com)

Toll free: (888) 303-FAST (3278)

RISING DAMP REPORT ON WEB

