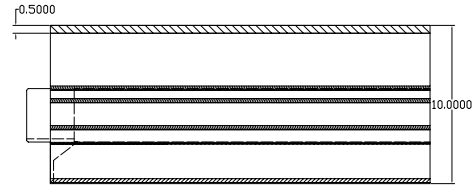
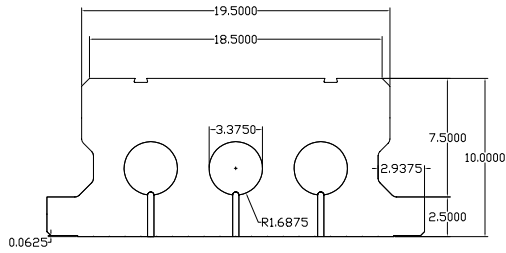
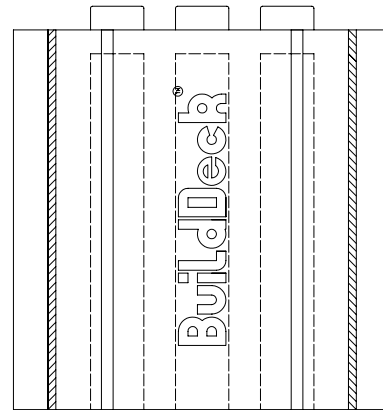
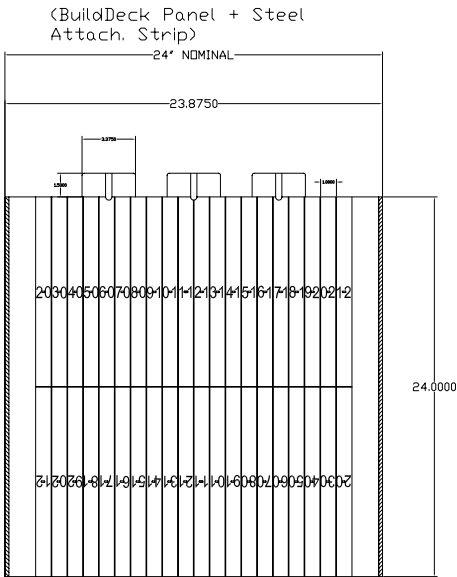
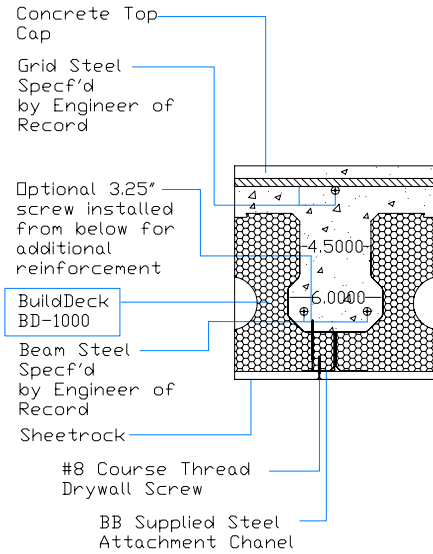


Note:  
Due to variations in  
printers and print  
settings, this detail  
may or may not be to  
scale.



Note:  
All concrete and steel  
design must be  
approved by the  
project specific  
Engineer of Record

Note:  
EPS risers of varying  
heights may be added  
to the top of BuildDeck  
panels to adjust heights  
according to engineered  
specifications.



9701 N. Broadway Extension Office (405) 840-3386  
Oklahoma City, Oklahoma 73114 Fax (405) 840-0625  
www.buildblock.com Toll Free 1-866-222-2575

BUILDDECK 10" FLOOR PANEL

DATE / REVISION	11-19-09	DETAIL SHEET
SCALE	AS NOTED	5 E
FILE NAME	BBdtl-5e	

Construction shall be built in accordance with all applicable local and national building codes. All drawings are subject to change without notice.