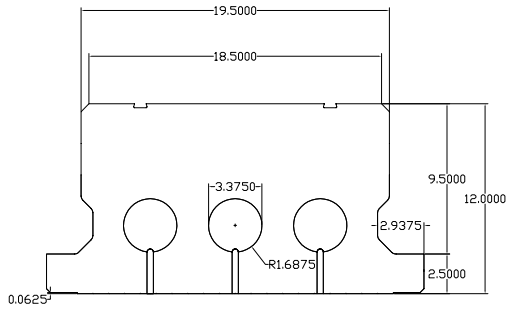
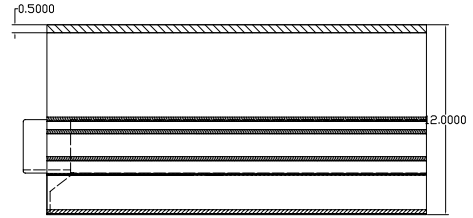


Note:  
Due to variations in  
printers and print  
settings, this detail  
may or may not be to  
scale.



Note:  
EPS risers of varying  
heights may be added to  
the top of BuildDeck  
panels to adjust heights  
according to engineered  
specifications.

Note:  
All concrete and steel  
design must be  
approved by the  
project specific  
Engineer of Record



Concrete Top  
Cap  
Grid Steel  
Spec'f'd  
by Engineer of  
Record

Optional 3.25"  
screw installed  
from below for  
additional  
reinforcement

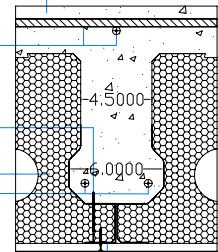
BuildDeck  
BD-1200

Beam Steel  
Spec'f'd  
by Engineer of  
Record

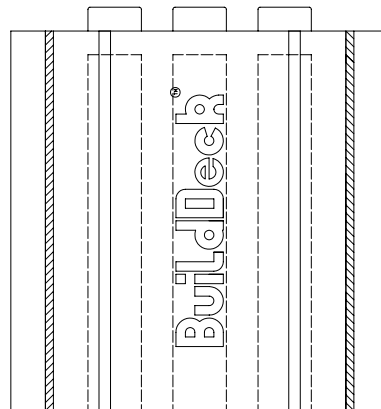
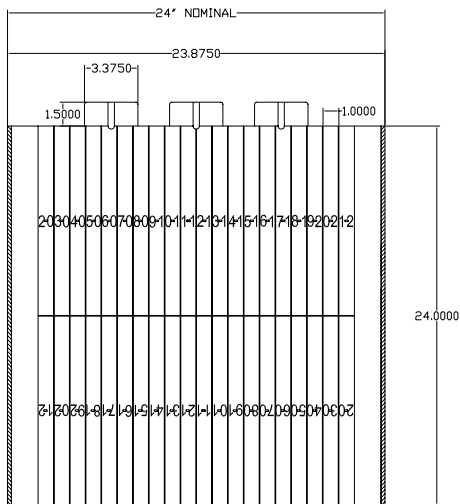
Sheetrock

#8 Course Thread  
Drywall Screw

BB Supplied Steel  
Attachment Channel



(BuildDeck Panel + Steel  
Attach. Strip)



9701 N. Broadway Extension Office (405) 840-3386  
Oklahoma City, Oklahoma 73114 Fax (405) 840-0625  
www.buildblock.com Toll Free 1-866-222-2575

BUILDDECK 12" FLOOR PANEL

DATE / REVISION	11-19-09	DETAIL SHEET <b>5F</b>
SCALE	AS NOTED	
FILE NAME	BBdti-5f	

Construction shall be built in accordance with all applicable local and national building codes. All drawings are subject to change without notice.