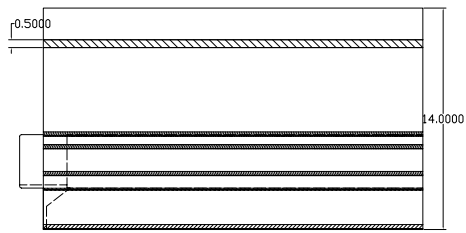
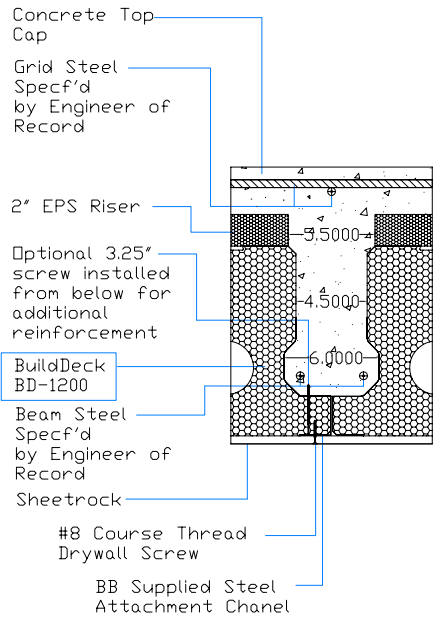


Note:
Due to variations in
printers and print
settings, this detail
may or may not be to
scale.

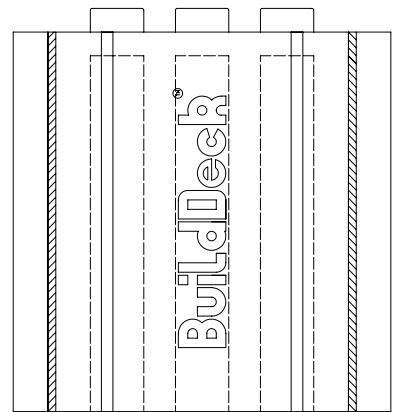
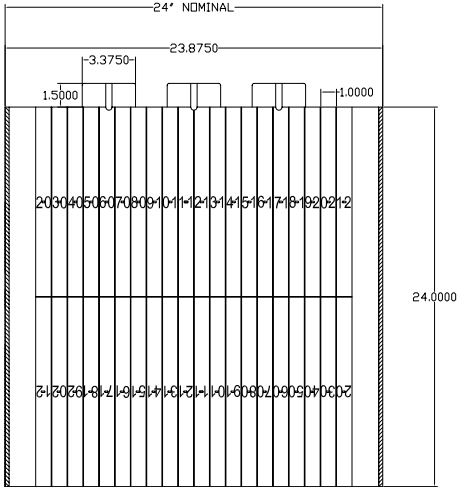


Note:
All concrete and steel
design must be
approved by the
project specific
Engineer of Record

Note:
EPS risers of varying
heights may be added
to the top of BuildDeck
panels to adjust heights
according to engineered
specifications.



(BuildDeck Panel + Steel Attach. Strip)



9701 N. Broadway Extension Office (405) 840-3386
Oklahoma City, Oklahoma 73114 Fax (405) 840-0625
www.buildblock.com Toll Free 1-866-222-2575

BUILDDECK 12" FLOOR PANEL+2"EPS		DETAIL SHEET 5G
DATE / REVISION	11-19-09	
SCALE	AS NOTED	
FILE NAME	BBdtl-5g	

Construction shall be built in accordance with all applicable local and national building codes. All drawings are subject to change without notice.