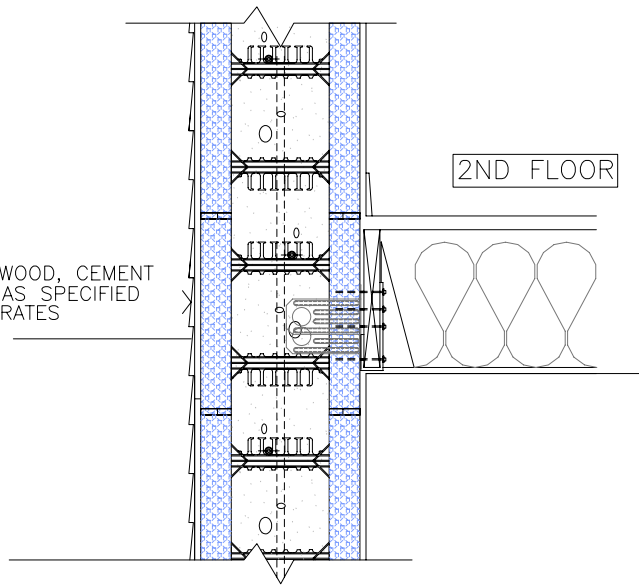
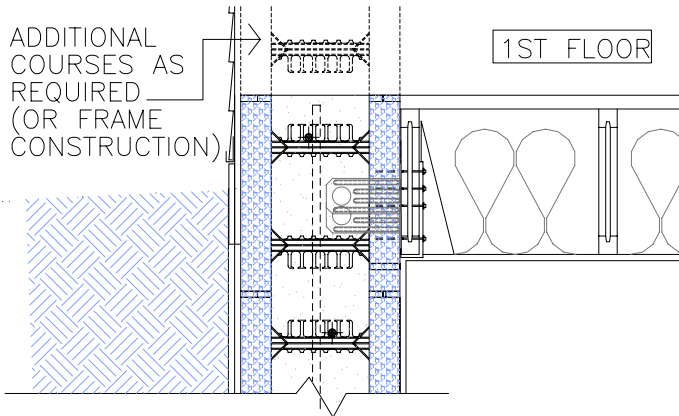


SIDING - VINYL, WOOD, CEMENT BOARD OR OTHER AS SPECIFIED (ADDITIONAL SUBSTRATES MAY BE REQUIRED)



2ND FLOOR

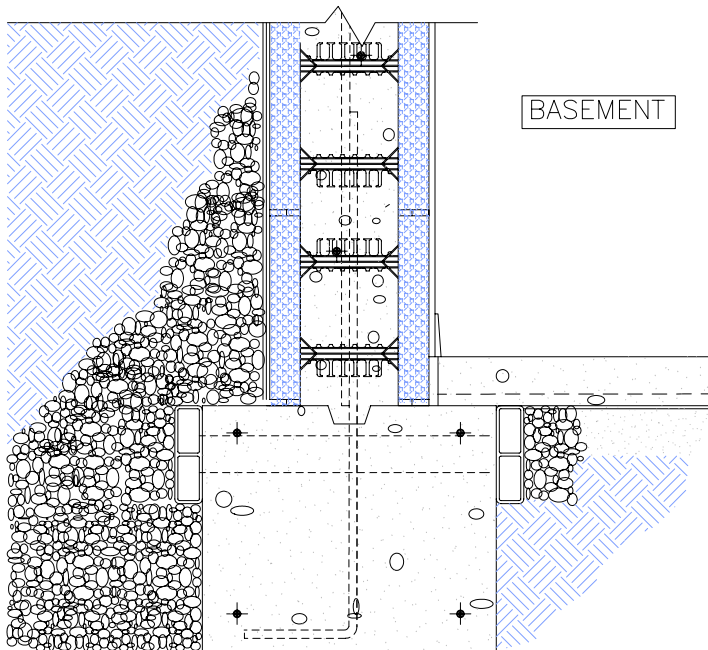
↑
ALTERNATE



ADDITIONAL COURSES AS REQUIRED (OR FRAME CONSTRUCTION)

1ST FLOOR

$\frac{1}{14}$ SIMILAR
TYPICAL FLOOR INTERSECTION
ALSO SEE ALTERNATE SECTION DETAIL 2-14 (SIM.)



BASEMENT

$\frac{1}{20}$
BASEMENT FOUNDATION

$\frac{1}{13d}$ TYPICAL WALL SECTION
SCALE: $\frac{3}{4}'' = 1'-0''$

NOTE:
DUE TO VARIATIONS IN SELECTED PRINTER SETTINGS, NOTED SCALES MAY NO LONGER BE APPLICABLE



9701 N. Broadway Extension
Oklahoma City, Oklahoma 73114
www.buildblock.com

Office (405) 840-3386
Fax (405) 840-0625
Toll Free 1-866-222-2575

BASEMENT WITH 1 OR 2 STORY BUILD BLOCK ABOVE		
DATE / REVISION	11-17-09	DETAIL SHEET
SCALE	AS NOTED	13d
FILE NAME	BBDTL-13d.AEC	
Construction shall be built in accordance with all applicable local and national building codes. All drawings are subject to change without notice.		