

**NOTE:**

INSTALL APPROVED MEMBRANE WATER-PROOFING AT ALL SURFACES BELOW GRADE  
 EXTEND 12" MIN. ABOVE FINAL GRADE

FLOOR SYSTEM PER CONSTRUCTION DRAWINGS

CONTINUOUS LEDGER BOARD

WEEP HOLES PER SECTION 703.7.6 OF THE IRC 2003 CODE

1ST FIN. FLR. ELEV. 100'-0" (DATUM)

SLOPE FINISHED GRADE AWAY FROM BUILDING

GROUT FILL BELOW GRADE

6" MIN.

APPROVED JOIST HANGER

MASONRY VENEER (VERIFY CODE APPROVED GRADE CLEARANCE FOR PROJECT LOCATION)

APPROVED MEMBRANE WATER PROOFING

CAST EMBEDDED STEEL ANCHOR BOLTS - SIZE & FREQUENCY PER ENGINEERING SPECIFICATIONS

**EXTERIOR APPLICATIONS**

FLOOR SYSTEM FOR EXTERIOR APPLICATION SUCH AS WOOD OR METAL DECKS MAY USE A SIMILAR ANCHORING SYSTEM TO THOSE SHOWN ON THIS DETAIL SHEET

FLOOR SYSTEM PER CONSTRUCTION DRAWINGS

CONTINUOUS LEDGER BOARD

1ST FIN. FLR. ELEV. 100'-0" (DATUM)

WEEP HOLES PER SECTION 703.7.6 OF THE IRC 2003 CODE

SLOPE FINISHED GRADE AWAY FROM BUILDING

GROUT FILL BELOW GRADE

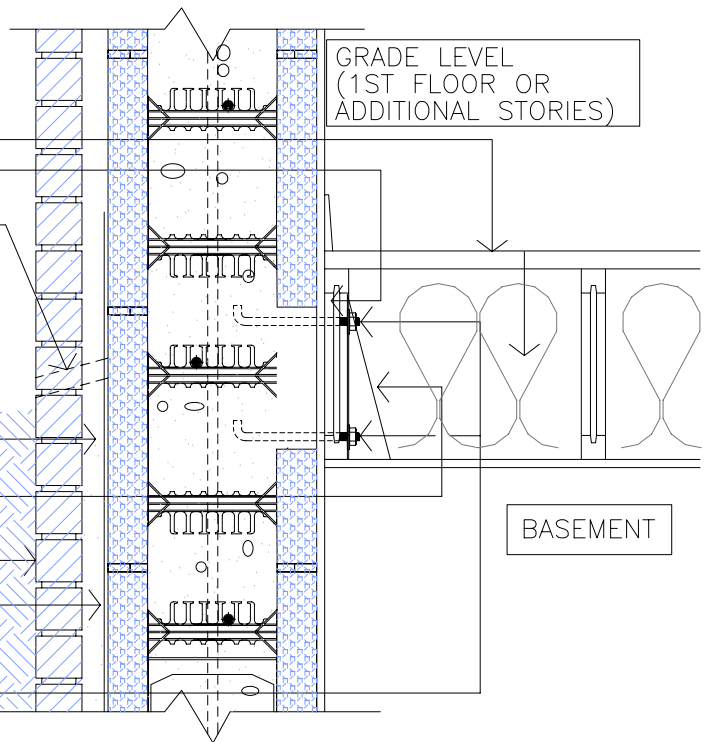
APPROVED MEMBRANE WATER-PROOFING AT ALL SURFACES BELOW GRADE

APPROVED JOIST HANGER

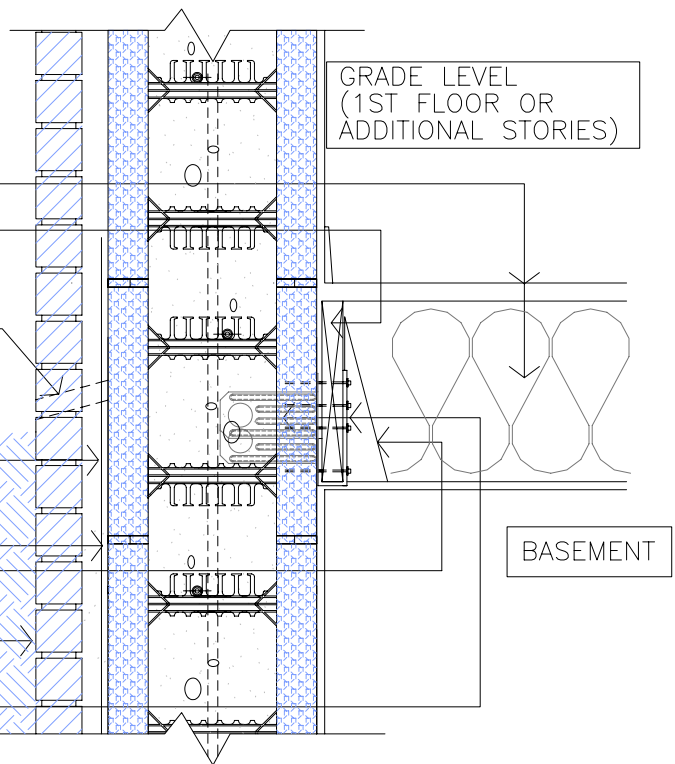
MASONRY VENEER (VERIFY CODE APPROVED GRADE CLEARANCE FOR PROJECT LOCATION)

ICF LEDGER CONNECTOR SYSTEM AS MFG. BY "SIMPSON STRONG-TIE INC.)

SEE ADDITIONAL INFORMATION ABOUT "SIMPSON" PRODUCTS ONLINE - WWW.STRONGTIE.COM OR CONTACT ENGINEERING SUPPORT @ 1-800-999-5099



2 ALTERNATE SECTION DETAIL  
 14b SCALE: 1" = 1'-0"



1 SECTION DETAIL  
 14b SCALE: 1" = 1'-0"

**NOTE:**

DUE TO VARIATIONS IN SELECTED PRINTER SETTINGS, NOTED SCALES MAY NO LONGER BE APPLICABLE

**BB BuildBlock**  
 BUILDING SYSTEMS, LLC

9701 N. Broadway Extension  
 Oklahoma City, Oklahoma 73114  
 www.buildblock.com

Office (405) 840-3386  
 Fax (405) 840-0625  
 Toll Free 1-866-222-2575

TYPICAL FLOOR WALL INTERSECTIONS		
DATE / REVISION	11-17-09	DETAIL SHEET
SCALE	AS NOTED	14b
FILE NAME	BBDTL-14b.AEC	
Construction shall be built in accordance with all applicable local and national building codes. All drawings are subject to change without notice.		