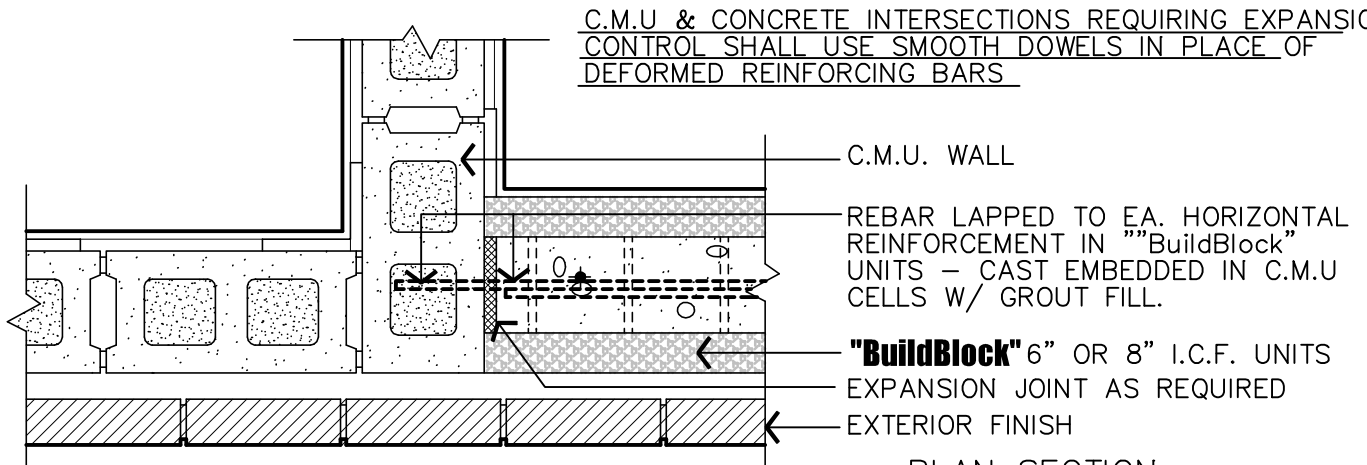
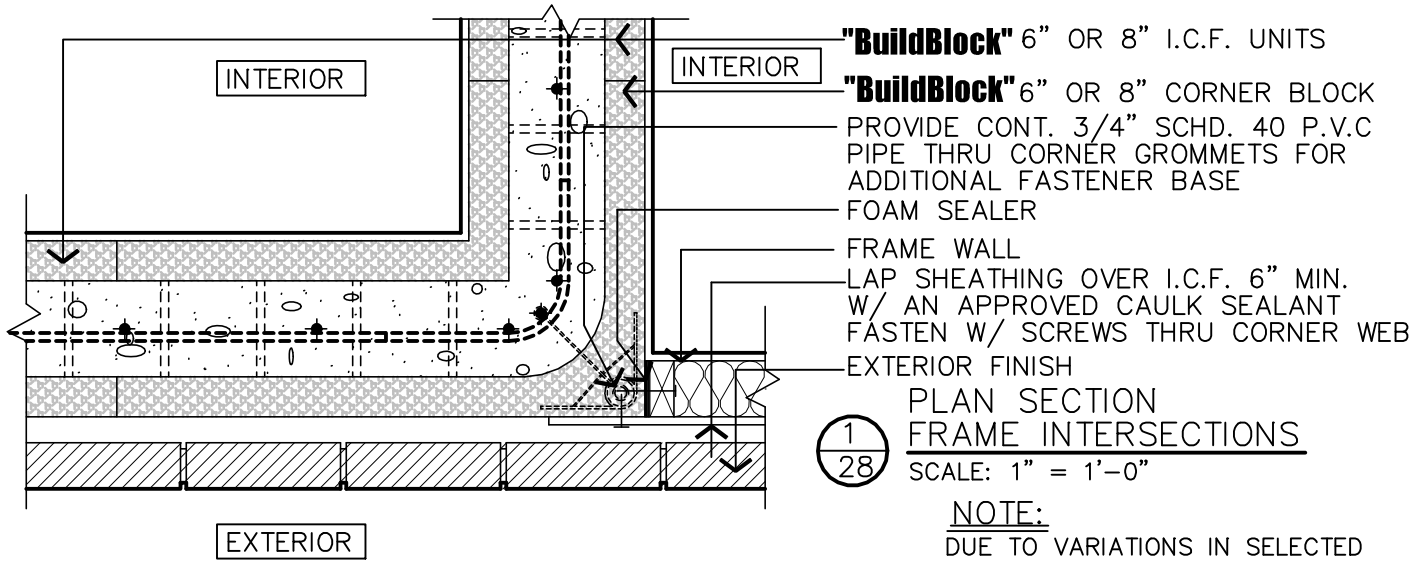


POURED CONCRETE WALL
 REBAR LAPPED TO EA. HORIZONTAL REINFORCEMENT IN **"BuildBlock"** UNITS - CAST EMBEDDED IN CONCRETE WALL
"BuildBlock" 6" OR 8" I.C.F. UNITS
 EXPANSION JOINT AS REQUIRED
 EXTERIOR FINISH
 PLAN SECTION - CONCRETE WALL INTERSECTIONS
 3 / 28 SCALE: 1" = 1'-0"



C.M.U. & CONCRETE INTERSECTIONS REQUIRING EXPANSION CONTROL SHALL USE SMOOTH DOWELS IN PLACE OF DEFORMED REINFORCING BARS

C.M.U. WALL
 REBAR LAPPED TO EA. HORIZONTAL REINFORCEMENT IN **"BuildBlock"** UNITS - CAST EMBEDDED IN C.M.U. CELLS W/ GROUT FILL.
"BuildBlock" 6" OR 8" I.C.F. UNITS
 EXPANSION JOINT AS REQUIRED
 EXTERIOR FINISH
 PLAN SECTION C.M.U. INTERSECTIONS
 2 / 28 SCALE: 1" = 1'-0"



"BuildBlock" 6" OR 8" I.C.F. UNITS
"BuildBlock" 6" OR 8" CORNER BLOCK
 PROVIDE CONT. 3/4" SCHED. 40 P.V.C. PIPE THRU CORNER GROMMETS FOR ADDITIONAL FASTENER BASE
 FOAM SEALER
 FRAME WALL
 LAP SHEATHING OVER I.C.F. 6" MIN. W/ AN APPROVED CAULK SEALANT FASTEN W/ SCREWS THRU CORNER WEB
 EXTERIOR FINISH
 PLAN SECTION FRAME INTERSECTIONS
 1 / 28 SCALE: 1" = 1'-0"

NOTE:
 DUE TO VARIATIONS IN SELECTED PRINTER SETTINGS, NOTED SCALES MAY NO LONGER BE APPLICABLE

9701 N. Broadway Extension
 Oklahoma City, Oklahoma 73114
 www.buildblock.com

Office (405) 840-3386
 Fax (405) 840-0625
 Toll Free 1-866-222-2575

HORIZONTAL INTERSECTION		
DATE / REVISION	12-01-04 / 1	DETAIL SHEET
SCALE	AS NOTED	28
FILE NAME	BBDTL-28.AEC	
Construction shall be built in accordance with all applicable local and national building codes. All drawings are subject to change without notice.		