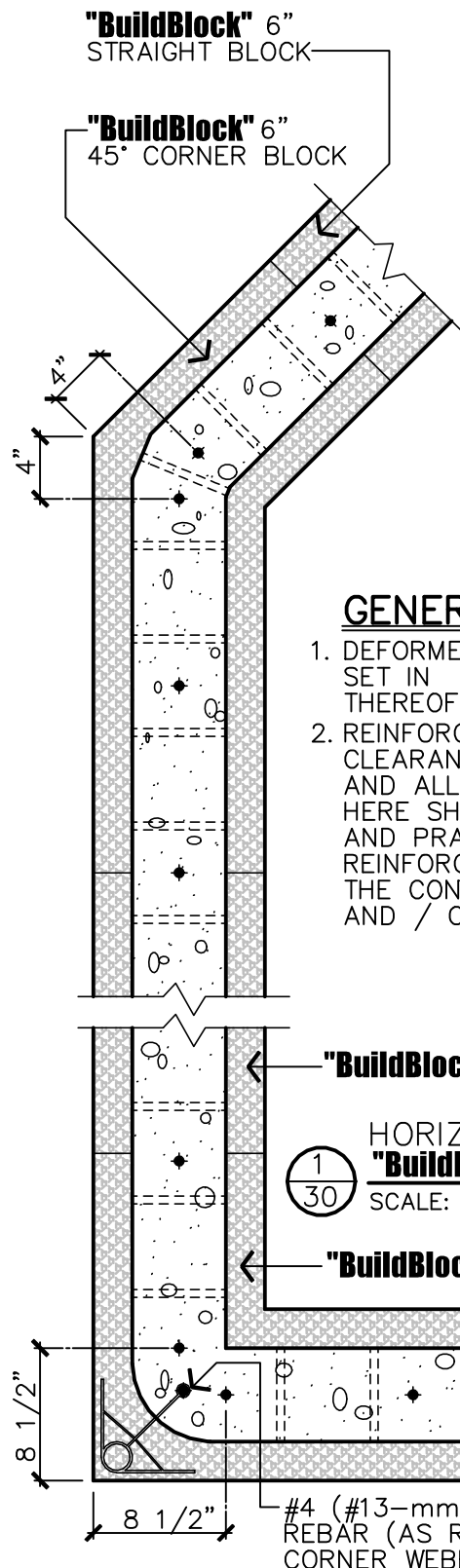


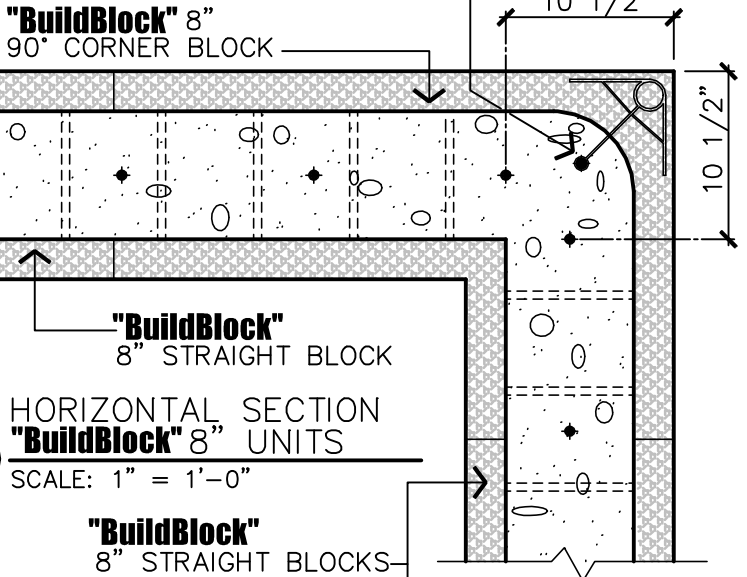
#4 (#13-mm) OR #5 (#16-mm) REBAR  
(AS REQUIRED) CONT. THRU CORNER WEBBING



①  
30  
HORIZONTAL SECTION  
"BuildBlock" 6" UNITS  
SCALE: 1" = 1'-0"

"BuildBlock" 6" STRAIGHT BLOCKS

"BuildBlock" 6" 90° CORNER BLOCKS

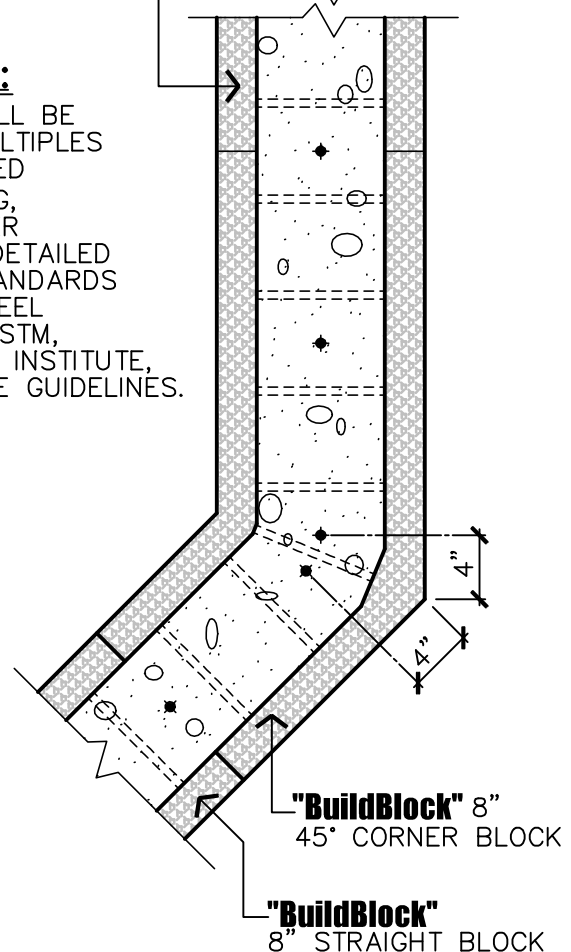


②  
30  
HORIZONTAL SECTION  
"BuildBlock" 8" UNITS  
SCALE: 1" = 1'-0"

"BuildBlock"  
8" STRAIGHT BLOCKS

**GENERAL DETAIL NOTES:**

1. DEFORMED REINFORCING BARS SHALL BE SET IN INCREMENTS OF 6" OR MULTIPLES THEREOF - BAR SIZES AS SPECIFIED
2. REINFORCING GRADES, LAP SPACING, CLEARANCES, MIN. CONCRETE COVER AND ALL ASPECTS OF THE WORK DETAILED HERE SHALL FOLLOW NATIONAL STANDARDS AND PRACTICES FOR CONCRETE STEEL REINFORCING AS PRESCRIBED BY ASTM, THE CONCRETE STEEL REINFORCING INSTITUTE, AND / OR OTHER LOCAL CODE USE GUIDELINES.



NOTE:  
DUE TO VARIATIONS IN SELECTED  
PRINTER SETTINGS, NOTED SCALES  
MAY NO LONGER BE APPLICABLE



9701 N. Broadway Extension  
Oklahoma City, Oklahoma 73114  
www.buildblock.com

Office (405) 840-3386  
Fax (405) 840-0625  
Toll Free 1-866-222-2575

VERTICAL REINFORCING

DATE / REVISION	11-28-06 / 2	DETAIL SHEET
SCALE	AS NOTED	30
FILE NAME	BBDTL-30.AEC	

Construction shall be built in accordance with all applicable local and national building codes. All drawings are subject to change without notice.