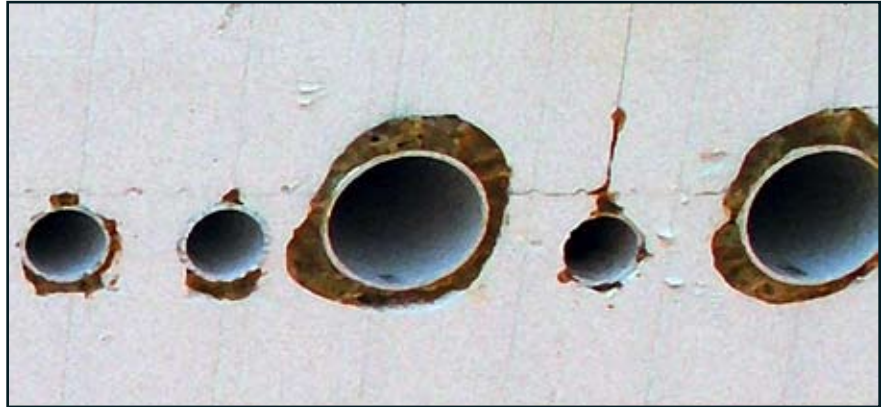


7.1 Installing Utility Access

Utility access is a very important step in planning, prior to concrete placement.

Access ports may include:

- ◆ Gas
- ◆ Electric
- ◆ Plumbing
- ◆ Water
- ◆ Communications



Note: *With a little effort, perfectly round holes could have been cut to receive these pipes. Otherwise, fill the voids with spray foam. Quality speaks for itself. Also, spread sleeves apart somewhat so concrete is not obstructed by the sleeves. Proper vibrating is required around all sleeves during the pour.*

Sleeves

To accommodate services that pass through outside walls, service sleeves must be installed prior to pouring. Otherwise, you must bore through the concrete! A little planning here will save you drilling into concrete that has hardened beyond its yield strength by two-thirds or more. Access ports are easy to install by inserting a PVC pipe into the wall. Even if you are not sure if you have service in that wall or not.

- ◆ You can sawtooth-cut a wider-than-wall piece of PVC and use it to bore into the foam, OR
- ◆ Make an imprint in the foam with the PVC sleeve; then use a long keyhole saw to cut through the foam. Make another imprint, cut the other side.
- ◆ Insert the sleeve and secure with adhesive foam. Brace or scab if necessary. You can cut off any excess PVC pipe at a later time.

